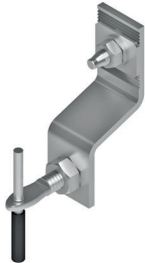


HZ Z Anchors - Introduction

- Direct fixing on to load bearing walls with expansion bolts
- Indirect fixing on to sub channel system with hex bolts or lock nuts
- Three dimensional adjustability - quick and easy fixing
- Installation at horizontal and vertical joints
- Recommended projection sizes up to 150 mm & loads up to 800 N

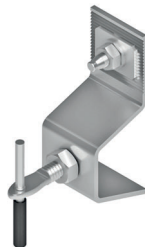
HZ01
Z Anchor



HZ02
Z Anchor



HZ05 Z Anchor
With riveted nut



HZ07
Soffit Anchor



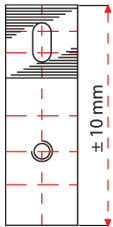
HZ08
Z Anchor



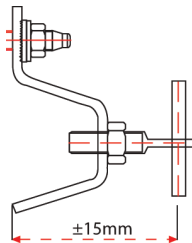
HRS1
Restraint Anchor



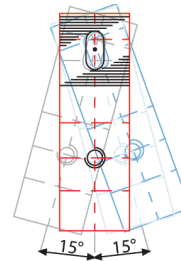
Three dimensional adjustability



1) Vertical adjustment is provided by the slotted hole. The anchor is fixed on to the bolt with the serrated washer at the desired level.

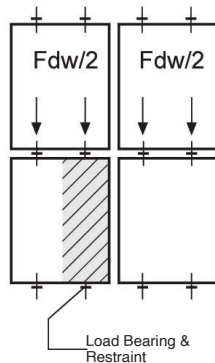


2) Adjustment of the projection size is provided by rotating the adjustable arm. The adjustable arm is locked with the hexagon nut.

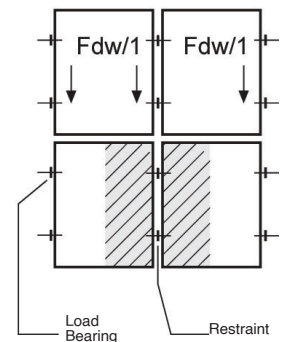


3) Adjustment of the anchor left and right is provided by sliding the body up to 15 degrees side ways.

Installation at horizontal joints



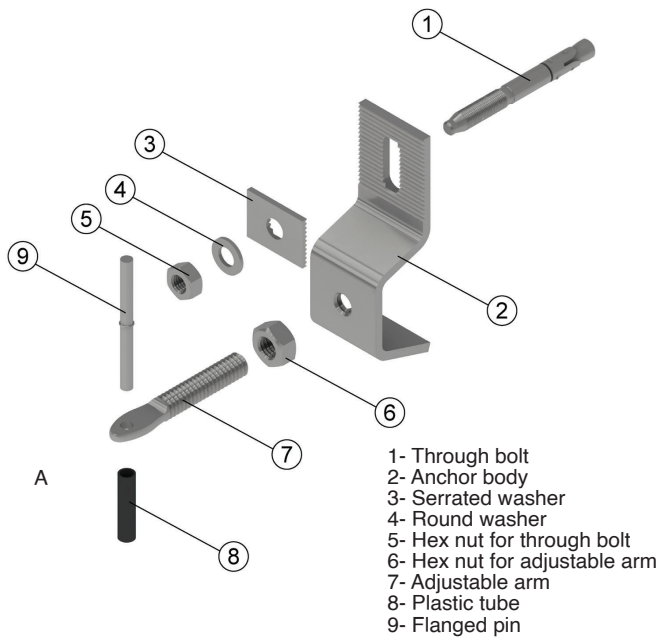
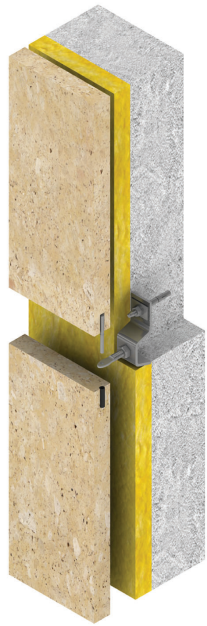
Installation at vertical joints



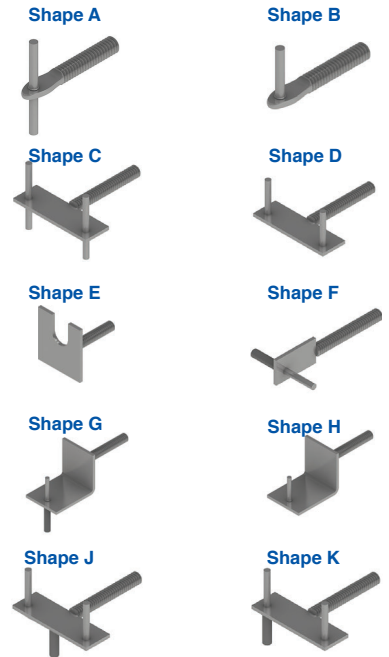
System features

- Suitable for fixing to load bearing substrates. Stone anchors are fixed directly to backing walls with expansion bolts.
- Recommended projection size between 45 mm to 135 mm and loads up to 800 N.
- In horizontal joint installation, slabs are pinned on the bottom and upper sides. Anchors act as load bearing carrying half the weight of the slabs above. Anchors also act as restraints, holding the slabs below and restraining against wind suction and pressure.
- In vertical joint installation slabs are pinned on the left and right sides. Anchors on the bottom are load-bearing anchors carrying the whole weight of the slab. Half the weight of the slab on the left and half the weight of the slab on the right. Anchors on the top are restraint anchors holding the slabs and restraining against wind suction and pressure.
- Three - dimensional adjustability allows quick and easy installation.
- The design and structural calculations of these anchors are made in our technical department. Special design and manufacturing can be made for the requirements of each project.

HZ Z Anchors - Installation Details



Adjustable arm variations



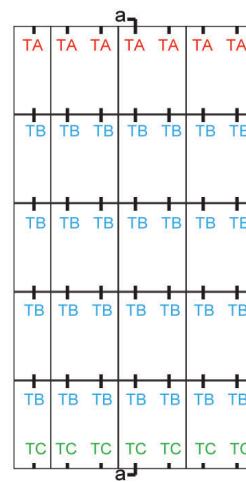
Installation at horizontal joints



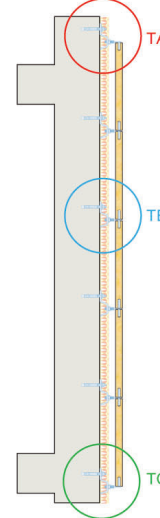
HZ02 Z Anchor



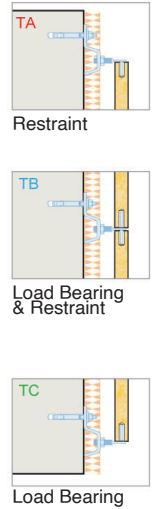
Elevation view



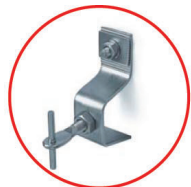
Section a-a



Installation details



Installation at vertical joints



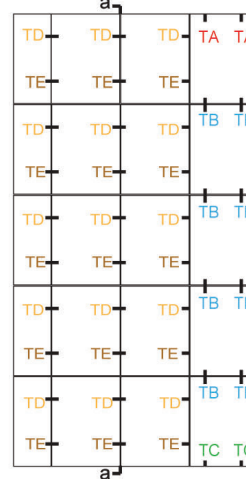
HZ02 Z Anchor



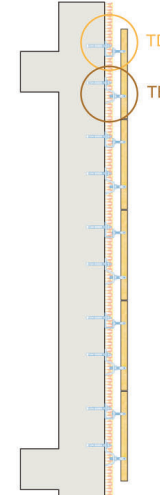
HRS01 Restraint Anchor



Elevation view



Section a-a



Installation details

