

# AXO Body Anchors - Introduction

- Direct fixing in to load bearing substrates with anchor bolts
- Indirect fixing on to sub channel systems with hex bolts or lock nuts
- Three dimensional adjustability - quick and easy fixing
- Installation at horizontal and vertical joints
- Optimum static performance for higher loads and larger projection sizes
- Recommended projection sizes up to 300 mm and loads up to 1300 N

**AXO1**  
Body Anchor



**AXO2**  
Body Anchor



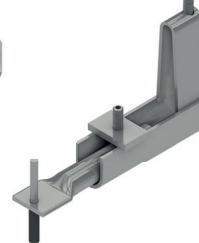
**AXO3**  
Body Anchor



**AXO4**  
Body Anchor



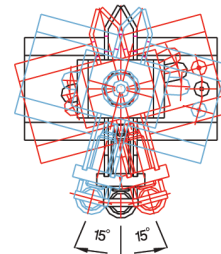
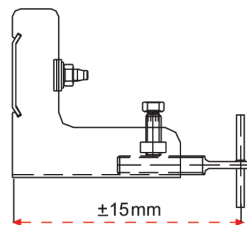
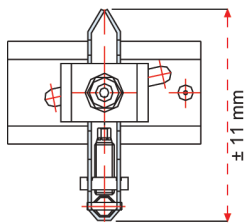
**HZTA**  
Telescope Anchor



**HRS3**  
Restraint Anchor



## Three dimensional adjustability

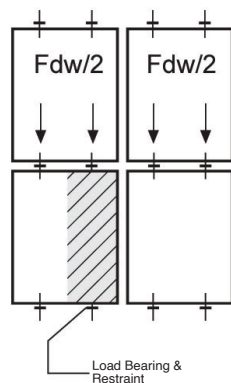
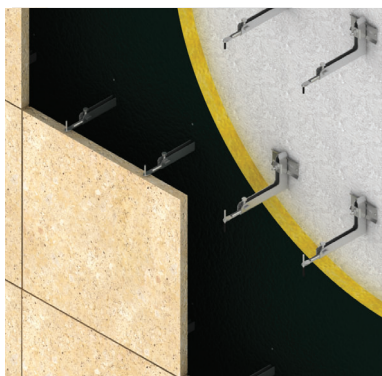


1) Vertical adjustment is provided through the body space. The anchor is fixed onto the bolt through the wedge washer and the lock washer at the desired level.

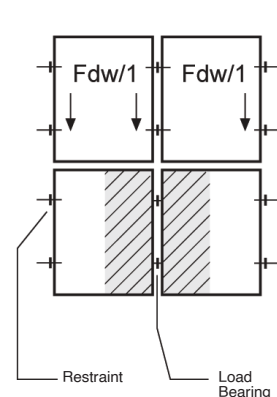
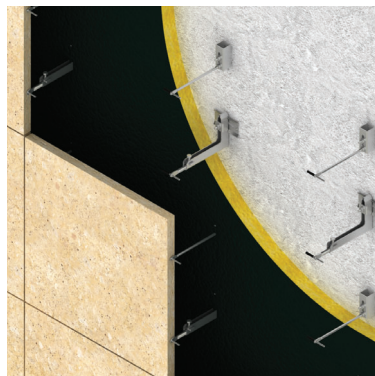
2) Adjusting the projection size by simply moving the adjustable arm without rotating. The adjustable arm is safely fixed to the anchor body with the lock nut and hex bolt.

3) Adjusting the anchor left and right is provided by sliding the body up to 15 degrees left or right.

## Installation at horizontal joints



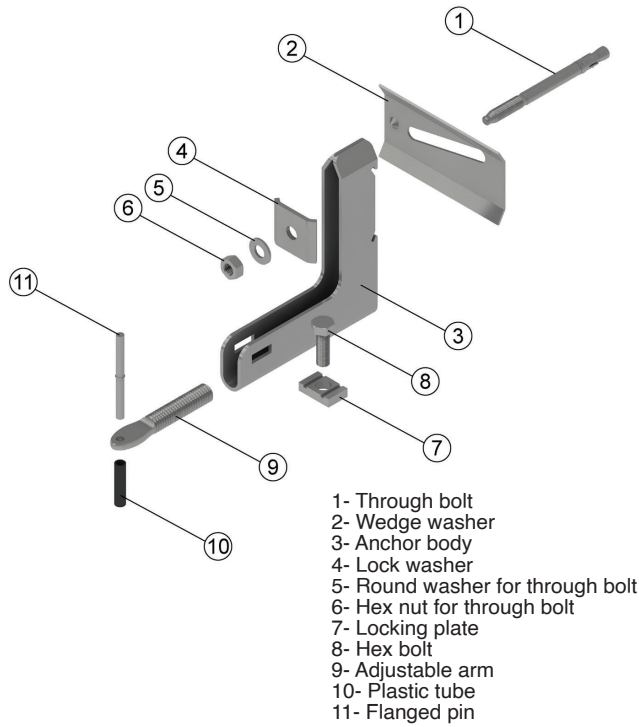
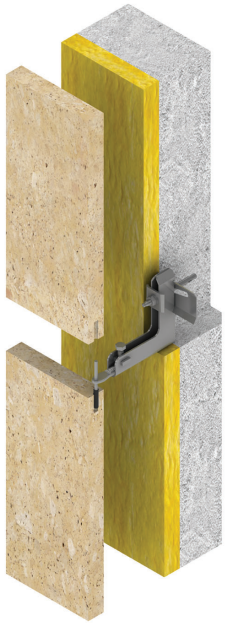
## Installation at vertical joints



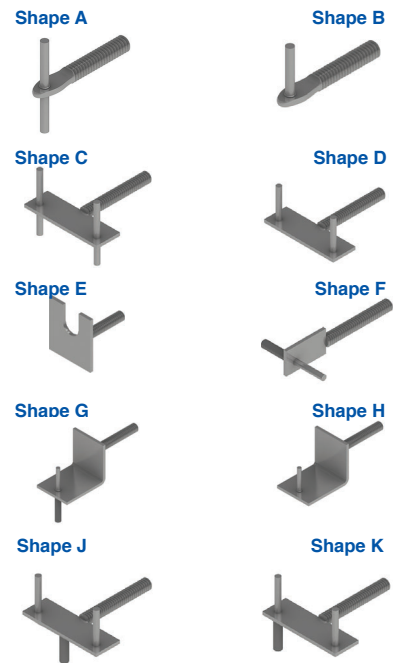
## System features

- Suitable for concrete walls. Anchors are fixed on to concrete walls with expansion bolts.
- Projection sizes between 60 and 300 mm and loads up to 1300 N.
- In horizontal installation, slabs are pinned on the bottom and upper sides. The anchors act as load bearing, carrying half the weight of the slabs above. Anchors also act as restraint holding the slabs below and restraining against wind suction and pressure.
- In vertical installation, slabs are pinned at the left and right sides. The anchors on the bottom are load-bearing anchors carrying the whole weight of the slab. Half the weight of the slab on the left and half the weight of the slab on the right. The anchors on the top are restraint anchors holding the slabs and restraining against wind suction and pressure.
- Three dimensional adjustability allows quick and easy installation.
- The design and structural calculations of these anchors are made in our technical department. Special design and manufacturing can be made for the requirements of the project.

# AXO Body Anchors - Installation Details



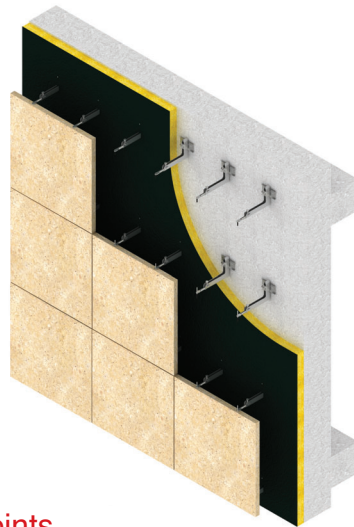
## Adjustable arm variations



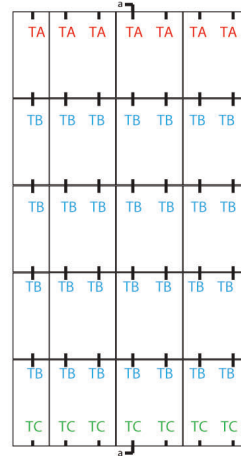
## Installation at horizontal joints



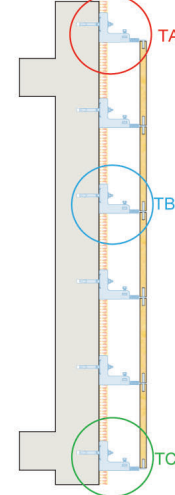
AXO4 Body Anchor



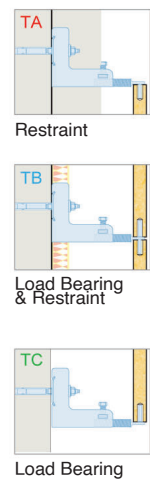
Elevation view



Section a-a



Installation details



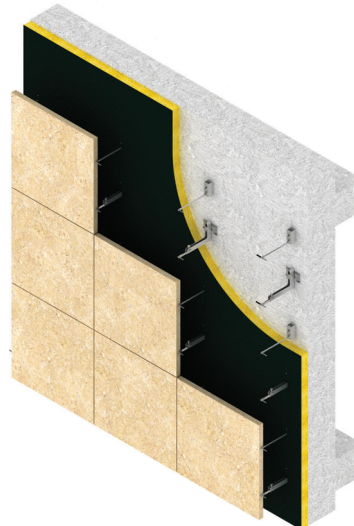
## Installation at vertical joints



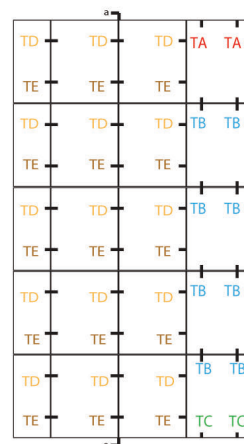
HRS3 Restraint Anchor



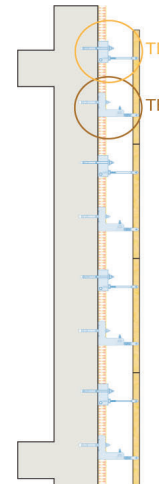
AXO4 Body Anchor



Elevation view



Section a-a



Installation details

