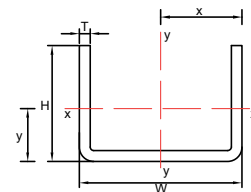


# HMP-ALU channels product details

## HMP-ALU-U U Channel



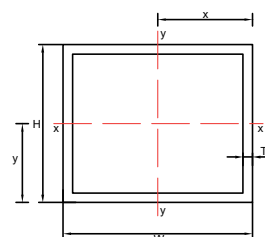
Product code	Thickness T (mm)	Section W/H (mm)	Ixx (cm <sup>4</sup> )	Sx (cm <sup>3</sup> )	x (mm)	Iyy (cm <sup>4</sup> )	Sy (cm <sup>3</sup> )	Y (mm)
HMP-ALU-U-45/32	3	45/32	4.08	3.46	22.50	10.76	4.78	11.78
HMP-ALU-U-50/37	4	50/37	7.86	5.69	25.00	19.44	7.77	13.80
HMP-ALU-U-60/42	5	60/42	14.07	9.16	30.00	39.33	13.11	15.36



## HMP-ALU-BV Box Channel



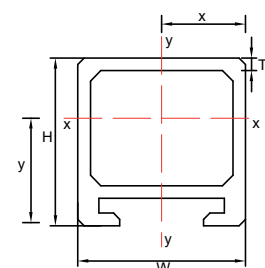
Product code	Thickness T (mm)	Section W/H (mm)	Ixx (cm <sup>4</sup> )	Sx (cm <sup>3</sup> )	x (mm)	Iyy (cm <sup>4</sup> )	Sy (cm <sup>3</sup> )	Y (mm)
HML-ALU-BV-60/50	3	60/50	24.17	9.66	25.00	32.26	10.75	30.00
HML-ALU-BV-80/50	4	80/50	38.88	15.55	25.00	82.70	20.67	40.00
HML-ALU-BV-100/50	4	100/50	47.37	18.95	25.00	144.13	28.83	50.00
HML-ALU-BV-120/50	5	120/50	66.33	26.53	25.00	276.33	46.05	60.00



## HMP-ALU-RL Slot Channel



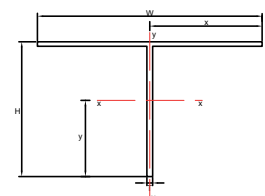
Product code	Thickness T (mm)	Section W/H (mm)	Ixx (cm <sup>4</sup> )	Sx (cm <sup>3</sup> )	x (mm)	Iyy (cm <sup>4</sup> )	Sy (cm <sup>3</sup> )	Y (mm)
HMP-ALU-RL-30	3	40/30	4.44	2.89	20.00	8.78	4.39	15.33
HMP-ALU-RL-40	3	40/40	9.50	4.76	20.00	10.84	5.42	19.92
HMP-ALU-RL-80	3	40/80	27.08	9.22	20.00	14.95	7.47	29.36



## HMP-ALU-T T Channel



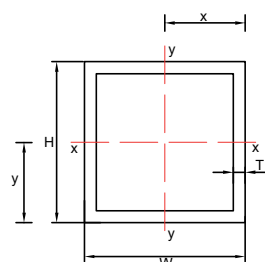
Product code	Thickness T (mm)	Section H/W (mm)	Ixx (cm <sup>4</sup> )	Sx (cm <sup>3</sup> )	x (mm)	Iyy (cm <sup>4</sup> )	Sy (cm <sup>3</sup> )	Y (mm)
HMP-ALU-T-50/80	2.5	50/80	6.90	1.75	40.00	10.67	2.67	39.40
HMP-ALU-T-60/100	2.5	60/100	12.90	2.55	50.00	20.84	4.17	47.78
HMP-ALU-U-60/120	3	60/120	15.09	3.09	50.00	43.21	7.20	78.84



## HMP-ALU-BH Box Channel



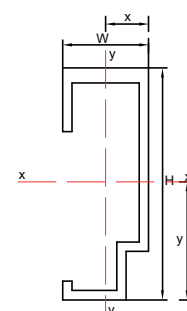
Product code	Thickness T (mm)	Section W/H (mm)	Ixx (cm <sup>4</sup> )	Sx (cm <sup>3</sup> )	x (mm)	Iyy (cm <sup>4</sup> )	Sy (cm <sup>3</sup> )	Y (mm)
HMP-ALU-BH-40/30	3.00	40/30	5.08	3.38	20.00	8.14	4.07	15.00
HMP-ALU-BH-40/40	3.00	40/40	10.20	5.10	20.00	10.20	5.10	20.00
HMP-ALU-BH-40/60	4.00	40/60	34.50	11.50	20.00	17.80	8.90	30.00



## HMP-ALU-P Agrafe Channel



Product code	Thickness T (mm)	Section W/H (mm)	Ixx (cm <sup>4</sup> )	Sx (cm <sup>3</sup> )	x (mm)	Iyy (cm <sup>4</sup> )	Sy (cm <sup>3</sup> )	Y (mm)
HMP-ALU-P-45/32	2.2	45/32	16.66	4.66	14.03	2.03	1.45	35.72



- Material: Extruded Aluminium Grade EN AW 6063 T66 mill finish and black anodised
- Table above is prepared according to Eurocode standards
- Loads stated are working resistance loads
- Channels can be provided up to 6 metres length.