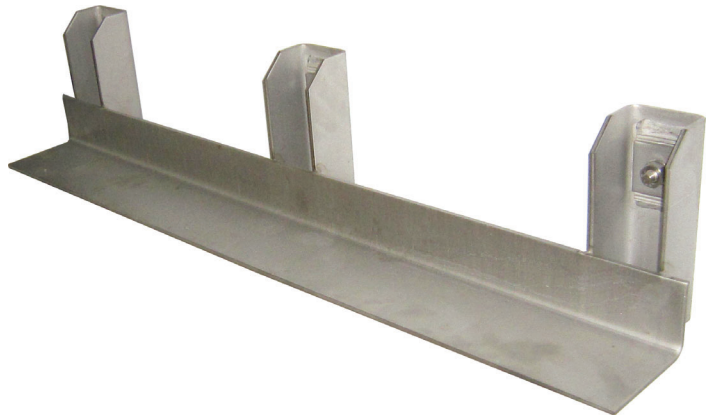


# HMCS Brickwork Continuous Support - Introduction

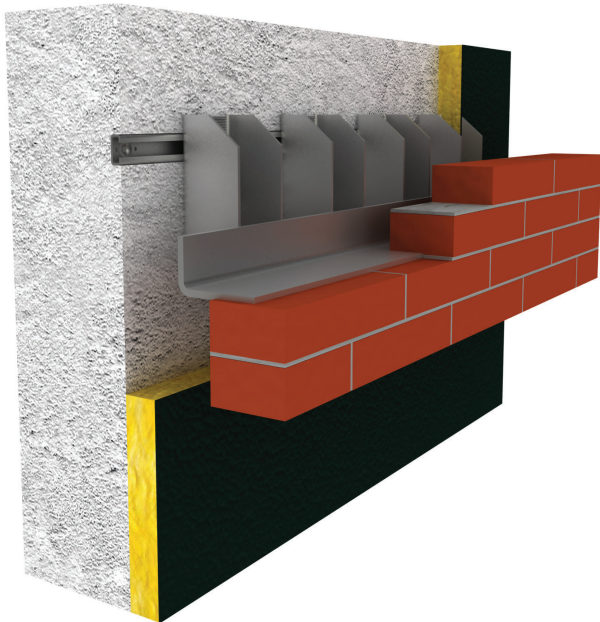
The HMCS brickwork continuous supports consists of a series of U brackets with welded angles. There are welded milled shims on the U brackets that enable secure positioning in the vertical axis, after adjustment.

These brackets are often used in load categories up to 18 kN and can be used for projection sizes from 130 to 230 mm. However special design can be made to accommodate higher loads and cavity sizes. Vertical adjustability is possible up to 25 mm and adjustability of the projection size is made up to 10 mm provided full height shims are used. The HMCS brickwork brackets can be designed and manufactured in a wide range of shapes and dimensions to suit the requirements of the project.

The HMCS continuous brickwork supports are available in 1,5 metres and can be manufactured with either 3, 4 or 5 U brackets, depending on the load specifications. These products are available in stainless steel 1.4301 (AISI 304) and 1.4401 (AISI 316)



HMCS Brickwork Continuous Support



• Perspective picture of brick facing installation with HMCS continuous support

Type 1 Continuous support with 5 welded brackets



Type 2 Continuous support with 4 welded brackets



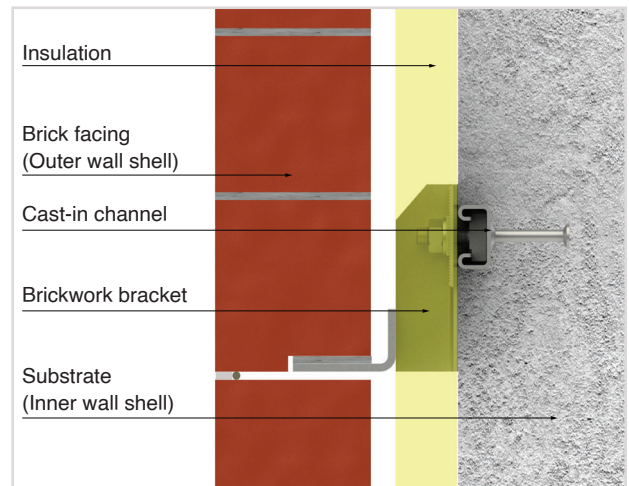
Type 3 Continuous support with 3 welded brackets



• available up to 1,5 metres with 3 different bracket spacings.

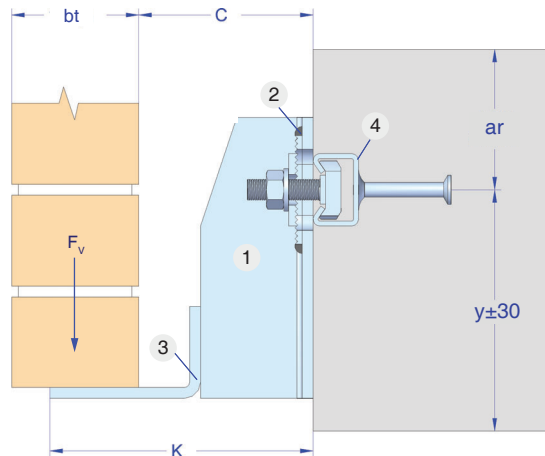
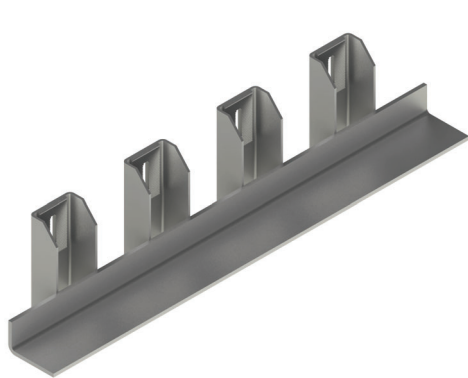


• Elevation picture of brick facing installation with HMCS supports



• Section picture of brick facing wall

# HMCS Brickwork Support Bracket - Product Details



- Support set elements:
- 1 - U Shaped bracket with vertical slot hole
  - 2 - Welded serrated washer
  - 3 - Welded support plate
  - 4 - Anchor channel for attachments

Product Code	Technical Details						
	Projection	Dead Load	Cavity	Bolt Height	Bolt Size	Bolt Spacing	Anchor Channel
	K (mm)	F <sub>dw</sub> (kN)	C (mm)	X (mm)	E.b. (mm)	SC	CI (mm)
HMCS-130/3.5	130	3.50	60	115	M10x90	460	28/15
HMCS-150/3.5	150		80				
HMCS-170/3.5	170		100				
HMCS-190/3.5	190		120				
HMCS-210/3.5	210		140				
HMCS-230/3.5	230		160				
HMCS-130/7	130	7.00	60	115	M12x110	370	38/17
HMCS-150/7	150		80				
HMCS-170/7	170		100				
HMCS-190/7	190		120				
HMCS-210/7	210		140				
HMCS-230/7	230		160				
HMCS-130/10.5	130	10.50	60	135	M12x110	400	40/25
HMCS-150/10.5	150		80				
HMCS-170/10.5	170		100				
HMCS-190/10.5	190		120				
HMCS-210/10.5	210		140				
HMCS-230/10.5	230		160				
HMCS-130/14	130	14.00	60	150	M16x130	350	49/30
HMCS-150/14	150		80				
HMCS-170/14	170		100				
HMCS-190/14	190		120				
HMCS-210/14	210		140				
HMCS-230/14	230		160				
HMCS-130/18	130	18.00	60	150	M16x130	300	49/30
HMCS-150/18	150		80				
HMCS-170/18	170		100				
HMCS-190/18	190		120				
HMCS-210/18	210		140				
HMCS-230/18	230		160				
HMCS-130/22	130	22.00	60	150	M16x130	300	54/33
HMCS-150/22	150		80				
HMCS-170/22	170		100				
HMCS-190/22	190		120				
HMCS-210/22	210		140				
HMCS-230/22	230		160				

• Material : Stainless Steel 1.4301 (AISI 304-A2) & 1.4401 (AISI 316-A4) • Load capacities refer to fixings in concrete ≥ C20/25 • Loads stated are allowable loads  
 • Other sizes are available for production upon request • Bolts and channels are provided separately • Structural calculation reports are available upon order

## HMCS Brickwork Continuous Support

The continuous brickwork supports are available in 1.5 metres as a standard length and can be specially designed to meet the application requirements. Adjustability in the vertical axis is made with milled serrated washers and a maximum of 10 mm lateral adjustability possible with full height shims

### Product Code Description

